

APPEALS INSPECTOR APPROVED

APP/Y2736/A/07/2055500

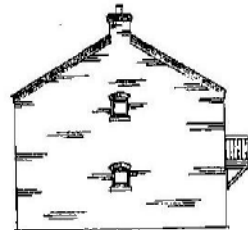
SCHEME 2

BRICK WALLS WITH MATCHING BRICK DETAILING TO EAVES AND GABLE  
VERGES, SLATE ROOF, WINDOW AND DOOR FRAMES IN TIMBER  
RAIN WATER GOODS IN BLACK PLASTIC, GUTTERING ON GALVANISED IRON  
AND FALL BRACKETS

BRICK WALLS WITH MATCHING BRICK DETAILING TO EAVES AND GABLE  
VERGES, CLAY PANTILE ROOF, WINDOW AND DOOR FRAMES IN TIMBER  
RAIN WATER GOODS IN BLACK PLASTIC, GUTTERING ON GALVANISED IRON  
AND FALL BRACKETS



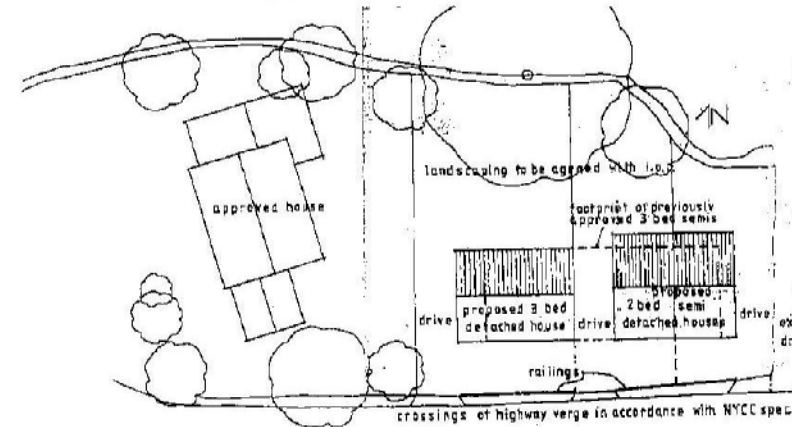
FRONT ELEVATION



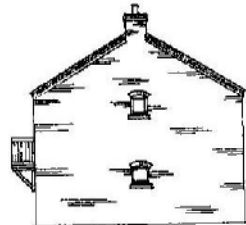
WEST SIDE ELEVATION



FRONT ELEVATION



REAR ELEVATION



EAST SIDE ELEVATION



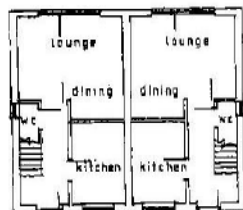
REAR ELEVATION



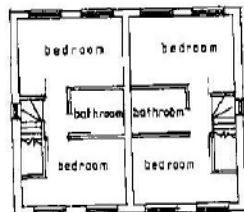
EAST SIDE ELEVATION



WEST SIDE ELEVATION



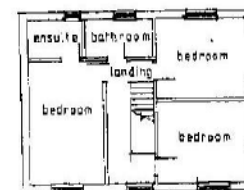
GROUND FLOOR



FIRST FLOOR



GROUND FLOOR



FIRST FLOOR

PROPOSED ERECTION OF A PAIR OF 2 BEDROOM SEMI DETACHED AND A 3 BEDROOM DETACHED HOUSE AT GOLDEN WELL FOR WILTON HOMES LTD

PROPOSED FLOOR PLANS, ELEVATIONS AND BLOCK PLAN

SCALE: 1:100 AND 1:200

DATE: FEBRUARY 2007

DRAWING NO. RD0703/07/1

Planning and Design Associates,  
Chartered Town Planners,  
Orchard House, Bunscombe, York YO41 1XU